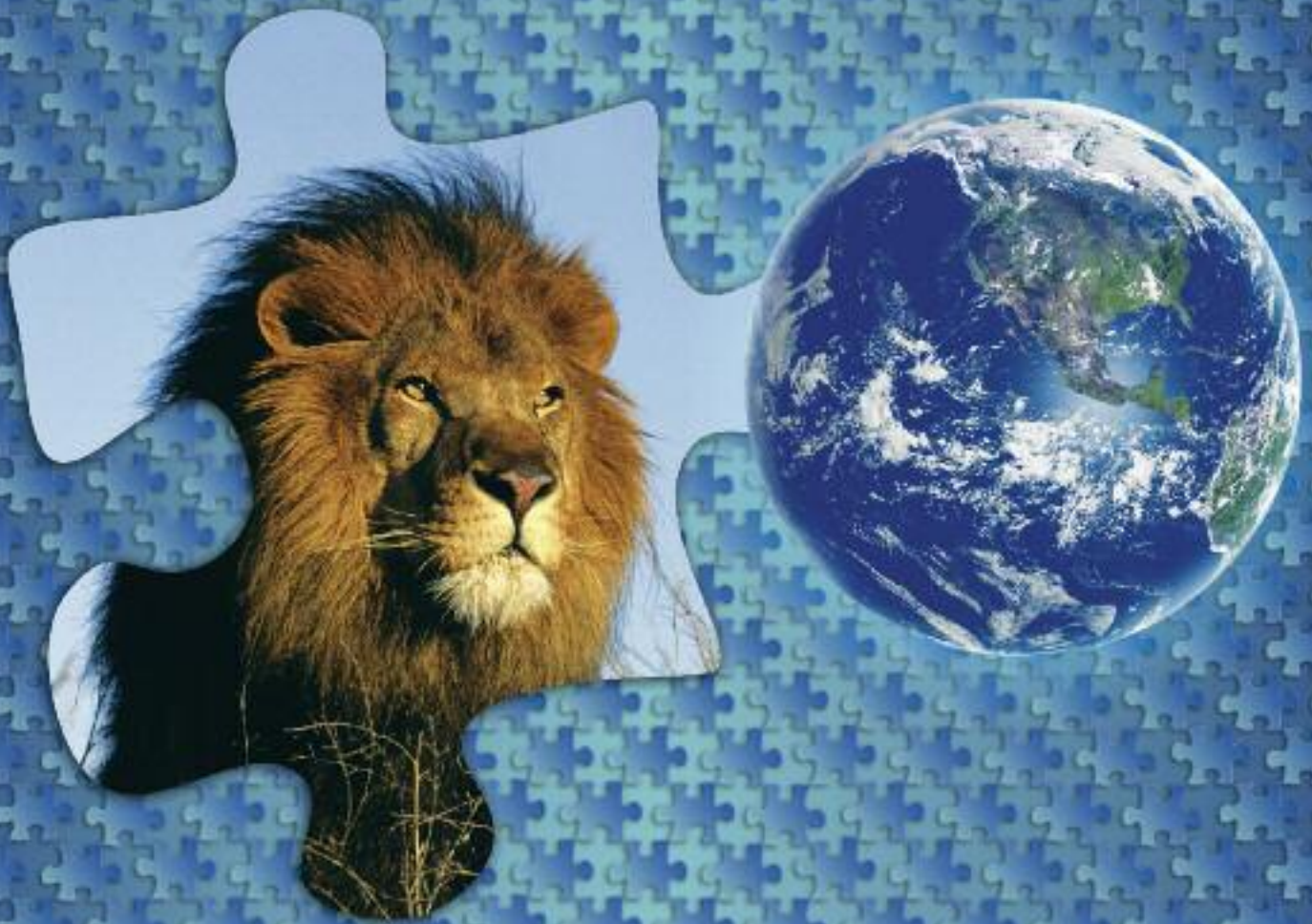


*Saving a
Piece of the World
for Its Wildlife*



North Carolina Zoological Society
Annual Report *2005*

The
North Carolina Zoological Society
Saving a Piece of the World for Its Wildlife



LYN ADAMS

Dear Members and Donors:

Driven mostly by strong support for the *Project: Pachyderms* capital campaign, the Zoo Society's 2005 net is the second highest in our history. Only 2002, a year with a single estate gift of \$2.5 million saw a net that was higher. In 2005, the Zoo Society transferred \$3,142,643 in grants to the N.C. Zoo, an increase of 15 percent over 2004. Corporate gifts and sponsorships, direct donations and special events all saw increases as well. Membership dues and Gift Shop sales dropped slightly, but performed well despite a predicted 2005 decline in Zoo visitation following the 2004 spike that resulted from the opening of the Australian Walkabout exhibit.

Regarding *Project: Pachyderms*, the Zoo Society reached the \$5.9 million mark in 2005 toward a then \$6 million goal to create *Watani Grasslands Reserve* at the N.C. Zoo (the goal has since moved to \$7 million to accommodate increased costs for construction, animal acquisitions, and educational graphics). This expansion of the existing African Plains exhibit area will create space for breeding herds of elephants and rhinoceroses and will establish world class facilities for species propagation. In addition, an immersion walkway and other innovative exhibit elements will provide visitors with an exceptional experience. Visitors to the new exhibit will come practically "eye to knee" with some of the largest creatures on the planet and will leave the Zoo with a new understanding of the importance of conservation.

This understanding is critical to our effort to "save a piece of the world for its wildlife." The generosity of donors like you has enabled the Zoo and Zoo Society to make significant strides toward increased awareness through innovative programming, art, education and research. Donors have also improved the lives of animals at the Zoo and around the world through such vital initiatives as elephant tracking in Cameroon and the Schindler Wildlife Rehabilitation Center right here in North Carolina.

The Zoo and Zoo Society appreciate the trust such generosity represents, and we want to say "thank you" to our members and donors for helping to make Zoo and Zoo Society programs possible. We will continue to maintain the highest level of stewardship over the resources our donors and members provide to help "save a piece of the world for its wildlife."

Thank you for all you do in support of the people, animals and habitats served by the N.C. Zoo and Zoo Society. You and members and donors like you make a real difference for the natural world.

Sincerely,

Russell H. Williams
Executive Director



Saving a Piece of the World *at the Zoo*

In 2005, the Zoo Society provided \$3,142,643 in direct support of the Zoo's animals, plants, education, recreation, conservation and research programs. Society funding also supported Zoo marketing, Zoo staff training and development, Zoo production of the award-winning television series *The Zoo FileZ*, Zoo management, Zoo Web site maintenance and more.

Zoo Improvements and Expansions

Project: Pachyderms

On the last day of November, 2005, C'sar, the N.C. Zoo's 31-year-old, five-ton African bull elephant, used his dexterous eight-foot trunk to turn the first shovel to begin construction of the new *Watani Grasslands Reserve*. When completed in the summer of 2007,



the complex will give the N.C. Zoo some of the zoo world's largest and most technologically advanced facilities for the exhibition and care of elephants and rhinos.

The new facility will combine the Zoo's existing elephant exhibit with the adjacent rhino exhibit to create a 7-acre habitat exclusively for elephants. The rhinos will share an improved 30-acre African Plains exhibit with many species of antelope. Off-exhibit areas will be improved as well. The existing elephant/rhino barn will be altered and improved to house only rhinos, and a new, 12,000-square-foot, \$2.5-million elephant barn will be constructed nearby. This state-of-the-art facility will enable the Zoo to improve husbandry and veterinary care for its elephants and expand its herd to as many as 10 animals of different ages and sexes. The expanded rhino facilities and exhibit space will also allow the Zoo to accommodate 10 or more rhinos.

Visitors to the new facility will follow an extended walkway directly into the heart of an African grassland with elephants on one side and teeming herds of rhinos and antelope on the other. New exhibits will put visitors in a ranger station to track elephants and poachers and will give visitors the opportunity to become involved with real programs to save real elephants in the wild.

Watani Grasslands Reserve will establish the N.C. Zoo as a world leader in elephant and rhino conservation and education. Within a decade, the new facility could place the N.C. Zoo among a handful of U.S. zoos with elephant and rhino herds large enough to produce young.

Most of the 2005 funding for the *Watani Grasslands Reserve* came from members and friends of the N.C. Zoo Society. Leonard and Rose Herring and the Leonard G. Herring Family Foundation of North Wilkesboro gave \$500,000. Branch Banking and Trust (BB&T) pledged \$250,000 in honor of Scott E. Reed of Winston-Salem, who served 24 years as Chief Financial Officer for BB&T and 13 years as a member of the N.C. Zoo Society Board of Directors. The F.M. Kirby Foundation provided \$250,000 for the *Reserve*. Bob and Bonnie Meeker pledged over \$227,000 and Talmadge and Ian Silver-sides gave \$175,000.

Progress Energy pledged \$60,000, part of which is earmarked for the Mabaki Camp portion of the new exhibit. The camp will resemble an African eco-camp with cots, storage containers, baggage, lanterns, an outdoor shower-mist station and fire pit. Entertaining and educational interpretive graphics located near the camp will focus on elephant social structure, and physiology and ecotourism in Africa's grasslands.

Other 2005 pledges include \$50,000 from Mr. Richard C. Sloan, \$50,000 from the Hans Klaussner Foundation, \$37,500 from Ms. Molly Millis-Hedgecock and \$27,000 in memory of Stephen Ross Angel. Mr. and Mrs. J.M. Boozer, Betsy and Richard Huber and Mr. James H. Millis, Jr. and Mr. and Mrs. Peter Pickens each contributed \$25,000. East Coast Metal Distributors gave \$23,000. Nancy and Monty White, Mr. and Mrs. L. Richardson Preyer, Mr. and Mrs. Charles W. Summers and Mr. Don F. Wellington each committed \$20,000. More than thirty other generous members and donors pledged between \$5,000 and \$19,000.



Valerie H. Schindler Wildlife Learning Center

In 2005, Zoo Society members and friends continued their generous support of the proposed Valerie H. Schindler Wildlife Learning Center, which will promote academic learning, scientific research and artistic expression in the Park. East Coast Metal Distributors pledged \$18,000 in gift-in-kind support, the Dickson Foundation gave \$10,000 and the George Foundation gave \$5,000. As of the end of 2005, the Zoo Society has raised \$579,992 of the \$630,000 needed for the project.

The Center, named in memory of the wife of Dr. Anton Schindler of Durham, will provide space and facilities for discovery and creative sharing between scholars, students and artists. The Center's teaching, Internet access and housing will support long-term exploration through workshops and hands-on research under the tutelage of the Zoo's professional staff. The Center will train as many as 75 college students and 100 teachers-in-training every year. In addition, the Center will expand the Zoo's leadership role in online learning and technology by offering classes in telemetry,

Global Positioning Systems, Archview and similar digital technologies that researchers use to promote conservation.

Honey Bee Exhibit

Zoo Society members and donors have also begun to show strong support for a Honey Bee exhibit that is scheduled to open to the public in 2009.

So far, \$49,269 has been raised toward a \$160,000 goal. The North Carolina State Beekeepers' Association provided \$10,380 and the Coastal Plains Chapter of the Association gave \$5,000. The North Carolina Farm Bureau also gave \$5,000.

Through this exciting exhibit, visitors will discover the vital role bees play in ecosystems, economies, and our daily lives. Interestingly, bees will be the "teachers" since this exhibit will contain an active hive.



Saving a Piece of the World *for Reaching and Teaching*



Art

The Zoo Society continues to emphasize art as a "sensory bridge" to the natural world. In 2005, another contribution by Bob and Bonnie Meeker brought four life-size hippo sculptures to the Zoo's African picnic area. Indiana artist Meg White created the sculptures from limestone blocks. The sculptures represent a hippo family composed of a male, female, juvenile and infant. The male hippo, carved from a 48,000 pound block of limestone, is 12 feet long and weighs 20,000 pounds. White said she researched hippo behavior, using both video and photographs, to create the family group.

The Zoo currently has one of the most extensive art collections to be found in any U.S. zoo. More than 30 major artworks are located throughout the park, ranging from life-size bronze elephants

at the Zoo entrance road to a 30-foot ceramic snake mural at the Sonora Desert exhibit.

U.N.I.T.E.

Uganda and North Carolina International Teaching for the Environment (U.N.I.T.E.) is a Zoo project designed to bring Ugandan and North Carolina Schools together to advance conservation education through teacher exchanges. Donors through the Zoo Society provided more than \$16,000 in 2005. During the year, six North Carolina teachers visited Uganda as part of the program, and John Tinka, a Ugandan educator who has played a key role in developing the U.N.I.T.E. program, visited eight North Carolina schools that currently participate in the Zoo project.

The visits gave Tinka the opportunity to observe, first-hand, creative teaching methods as well as student-centered conservation projects and to share information about common environmental concerns.

Funds raised through the project have paid for construction of two new classrooms and a library at the Bigodi Primary School in Tinka's village.



Interactive Technology

An interactive compact disc (CD) highlighting the North Carolina Zoo's conservation, education, research and recreation missions received a Sir Walter Raleigh Award for exemplary work in 2005 from the Raleigh Public Relations Society and The Media Communications Association-International. The CD, produced and donated to the N.C. Zoo Society by MindWorks Multimedia of Durham, N.C., uses modern interactive technology to provide viewers with an exceptional multimedia introduction to the Zoo.

MindWorks donated the CD to the Zoo through the Zoo Society. The total contribution is valued at \$75,000 over three years. Yet the impact of the CD is far more difficult to quantify. Everyone who experiences the CD is able to explore the Zoo's exhibits, the Wildlife

Rehabilitation program, the Zoo's participation in the Red Wolf Recovery Program and much more through video, high resolution graphics, audio and easy-to-navigate menu options built around an interactive format.

Veterinary Residency

The Zoo Society Board of Directors designated \$36,000 in 2005 for the Zoo Veterinary Residency Program, a joint program between the N.C. Zoo and N.C. State University. The 3-year program provides in-depth training in the medical and scientific aspects of clinical zoological medicine, and includes non-clinical periods for literature review, basic science training, case report preparation, preparation for board examination, and research.

Saving a Piece of the World *for Outdoor Fun*

Zoo To Do

Sponsored for the sixth year by Randolph Telephone, *Zoo To Do* 2005 generated more than \$192,000. The bulk of the funds was combined with previous *Zoo To Dos* to support *Project: Pachyderms*. The Randolph Friends of the Zoo, a volunteer board of civic leaders who coordinate *Zoo To Do*, has pledged \$2 million from *Zoo To Do* earnings to become the overall sponsor of the *Watani Grasslands Reserve* exhibit.

A small portion of the money (\$7,500) supports a special Randolph Friends of the Zoo fund to provide grants to Zoo and Zoo Society employees' programs that advance the Zoo's conservation, education, research or recreation missions.

Holiday Happenings

As in previous years, the N.C. Zoo Society in 2005 underwrote the Zoo's biggest holiday events, "Nightmare" held during the last three weeks of October, and "Holiday of Lights" from November 25 to January 1.

"Nightmare" featured ghosts, goblins and all manner of creepy things during an after-hours haunted tram ride through the Zoo. The event, aimed primarily at ages six through adult, also included a plant maze stretching over half an acre, Halloween light displays, roaming costumed characters, storytelling beside a bonfire, wizards, fortune telling, pumpkin carving and air-brushed tattoos. During the tram ride, guests encountered Dracula and his castle, a giant spider and web, ghosts, flying witches, zombies, a 12-foot-tall fire-breathing dragon, a witch's cottage, a giant cauldron and much more. After departing the tram ride, guests enjoyed the spooky graveyard, a troll house and a new 3D Spooky House of Illusion. In addition, the park's SimEx Simulator, a ride-the-movies experience, offered "The Haunted Mine" ride.

The Courier-Tribune Zoo Open

In 2005, the Zoo Society's annual Zoo Open Golf Tournament, sponsored by The Courier-Tribune, was reshaped to support the Barbara Hobson Memorial Scholarship. The scholarship serves as a living memorial to former N.C. Zoo Society employee, Barbara Hobson. Hobson served as the Zoo Society's retail director for more than 20 years and was known and respected for her indomitable spirit and concern for people. Through the support of the Hobson family and with future endowments, the scholarship

will help students participate in Zoo programs while pursuing careers that benefit wildlife.

Golfers competing in the 2005 Courier-Tribune Zoo Open posted one of the N.C. Zoo Society's most successful golf tournament fundraisers, netting more than \$12,300. In all, 10 corporate teams, 13 regular teams and 26 single players participated.



TOM GILLESPIE

For Members Only

Many Zoo Society members and their guests enjoyed two members-only events in 2005, *Wake Up With the Animals* and *Sunset With the Animals*. During these annual events, members gather at the Park outside normal operating hours for entertainment, refreshments and fellowship with others who share their commitment to "saving a piece of the world for its wildlife."

Many members also participated in Super Society Saturday programs such as Australia's Unique Plants, Charming Chimps, and a Zoo Photo Safari.

Saving a Piece *of North Carolina*

Sylvan Heights

Many species of swans, geese and ducks face loss of habitat, pollution and a host of other dangers that could lead to their extinction. For many of these birds, the conservation and education projects at Sylvan Heights Waterfowl Center in Scotland Neck, North Carolina, are the best hope for survival.

Sylvan Heights Waterfowl Center is one of the world's leading breeders of endangered waterfowl and has made significant contributions to the survival and recovery of many threatened species. In 2005, donors through the N.C. Zoo Society provided \$292,000 toward a \$1.5 million goal to establish the new Sylvan Heights Waterfowl Park and Eco-Center. By the end of 2005, total contributions exceeded \$600,000 and construction was well under way on this exciting new facility.

The goal is to establish a world class eco-tourism facility where visitors can explore aviaries representative of the Americas, Europe, Africa, Asia and Australia. The facility will include an avian theater and a collection of avian artwork. Professionals will have access to the Center for Advanced Avian Studies with a library, conference room,



DON L. COHEN, MD



office, laboratory, lounge and kitchen. This Center will become a hub for programs and projects to preserve endangered waterfowl around the world.

The generosity of Zoo Society members and donors has been critical to the amazing progress in Scotland Neck. Steinhardt Management Company gave \$100,000. Mrs. Martha Iverson and Golden LEAF, Inc. each gave \$50,000. The Southern Bank Foundation contributed \$25,000 and BB&T gave \$15,000. Mr. John F. Nuccitelli provided more than \$8,500 of gifts-in-kind, and Dr. and Mrs. Melvin Levine, Mr. and Mrs. M. Craig West and Electricities of North Carolina, Inc. each gave \$5,000.

Wildlife Rehab Center

As in previous years, private donations to the N.C. Zoo Society provided all the medicines, food and rehabilitative services needed to care for the nearly 1,000 injured or orphaned North Carolina animals that came to the Valerie H. Schindler Wildlife Rehabilitation Center in 2005. The Center also touched more than 2,000 North Carolina School Children by taking educational programs across the state to teach people how to live more compatibly with wildlife.

Saving a Piece *of the World*

African Elephants

In 2005, the N.C. Zoo Society provided \$15,000 in emergency funding to shore up elephant protection in the African nation of Cameroon. The funding was prompted when Cameroon's World Wildlife Fund (WWF) confirmed that ten poached elephants were discovered in and around Waza National Park, one of Cameroon's most important elephant reserves.

African elephants have been on the endangered species list since 1988. The unprecedented loss of 10 elephants at one time sparked immediate response from N.C. Zoo Chief Veterinarian Dr. Mike Loomis, who has maintained a close nine-year partnership with Cameroon's World Wildlife Fund Central Africa Regional Programme Office. The partnership has focused on tracking elephant herds to monitor and prevent conflicts between them and growing

human populations.

Initial investigations indicated that most of the poaching was carried out by well-armed ivory hunters, probably foreigners, who slipped back and forth across international borders to avoid detection. Local tribesmen are probably contributing to the poaching, too. Suffering from the results of a prolonged drought, these people have poured into Waza National Park in search of water and grass for their cattle.

Loomis requested Zoo Society funding to increase the number of armed rangers patrolling Waza. The hope is that increased ranger patrols will buy time for Cameroon wildlife officials to persuade the Cameroon government and judiciary to put other long-term solutions into place. Thanks to quick action by concerned donors, the Zoo Society was able to quickly provide the funding.



Kabul and Baghdad Zoos

Brendan Whittington-Jones, a South African wildlife conservationist who played a key role in rebuilding war-torn zoos in both Kabul, Afghanistan, and Baghdad, Iraq, visited the N.C. Zoo in 2005 with updates on progress in those war-torn countries. Efforts led by the N.C. Zoo and Zoo Society in previous years directed more than \$560,000 for the Kabul Zoo and Afghan animals, and nearly \$100,000 for the Baghdad Zoo. The Zoo and Zoo Society continued this support in 2005 by providing more than \$106,000 to the three projects.

During his visit, Whittington-Jones noted that tremendous



progress has been made in recent months in Kabul, where improvements have included the construction of new exhibits and staff facilities as well as the repair of old ones. Success has also been achieved in establishing dependable and healthy sources of food and water for the animals, training in modern care techniques for keepers and veterinarians and the establishment of education programs for visitors.

Farah Murrani, an Iraqi veterinarian who assisted in the recovery of the Baghdad Zoo, served a six-month internship with the N.C. Zoo's veterinary staff in 2005.

Saving a Piece *of the Future*

In an accreditation report written after thorough inspection of the N.C. Zoo in 2005, the American Zoo & Aquarium Association accreditation team described the N.C. Zoo as “a magnificent property with an enormous investment in high-quality exhibits.” The report also commended the Zoo for demonstrating “extraordinary effectiveness and leadership as a conservation and education institution at the local, national and international levels.”

Zoo Society members and donors are largely responsible for this positive assessment. Support from Zoo Society members and donors has helped save the lives of injured and orphaned animals, provided a higher quality of life for animals at the N.C. Zoo, protected wildlife from Asheville to Africa, helped war-recovery efforts, trained conservation and education professionals and has revealed the wonders of the natural world to children and adults.

Evidence of their support is visible in the construction underway on the *Watani Grasslands Reserve* and in the dynamic activities of N.C. Zoo research and conservation teams in

Cameroon, just to name two. Yet, the true significance of this evidence is that it demonstrates an abiding commitment to “saving a piece of the world” for the future.

The Zoo Society closes 2005 deeply grateful for the strong support from members, donors and friends who have helped lay the groundwork for this exciting future, and we rededicate ourselves to maintaining the highest standards of stewardship of the funds entrusted to us. Each member of the Zoo Society's Board and professional staff is committed to stewardship, service and uncompromising ethical standards.

With this standard of dedication in place, and with continued support from our members and donors, the pieces of the world we save for wildlife and for people who care about the natural world will continue to grow.



Annual Report 2005

Statement of Financial Position

ASSETS

	2005	2004
Cash and Equivalents	\$ 1,886,476	\$ 1,615,222
Investments	10,904,218	10,098,069
Pledges Receivable	1,734,306	1,323,778
Accounts Receivable	19,830	26,045
Accrued Interest Receivable	8,509	6,816
Inventories	380,400	396,623
Prepaid Expenses	55,802	62,589
Cash Surrender Value of Life Insurance	4,670	4,700
Property and Equipment	266,232	295,800
Total Assets	<u>\$ 15,260,443</u>	<u>\$ 13,829,642</u>

LIABILITIES AND NET ASSETS

Liabilities

Accounts Payable and Accrued Expenses	\$ 584,067	\$ 165,225
Liability Under Unitrust Agreement	512,572	271,445
Deposits	0	225
Total Liabilities	<u>\$ 1,096,639</u>	<u>\$ 436,895</u>

Net Assets:

Unrestricted	\$ 8,015,909 *	\$ 8,345,690
Temporarily Restricted	5,870,982	4,844,462
Permanently Restricted	276,913	202,595
Total Net Assets	<u>\$ 14,163,804</u>	<u>\$ 13,392,747</u>

Total Liabilities and Net Assets	<u>\$ 15,260,443</u>	<u>\$ 13,829,642</u>
---	-----------------------------	-----------------------------

*Includes \$7,560,912 Board-designated for specific Zoo Purposes

Statement of Activities

CHANGES IN UNRESTRICTED NET ASSETS

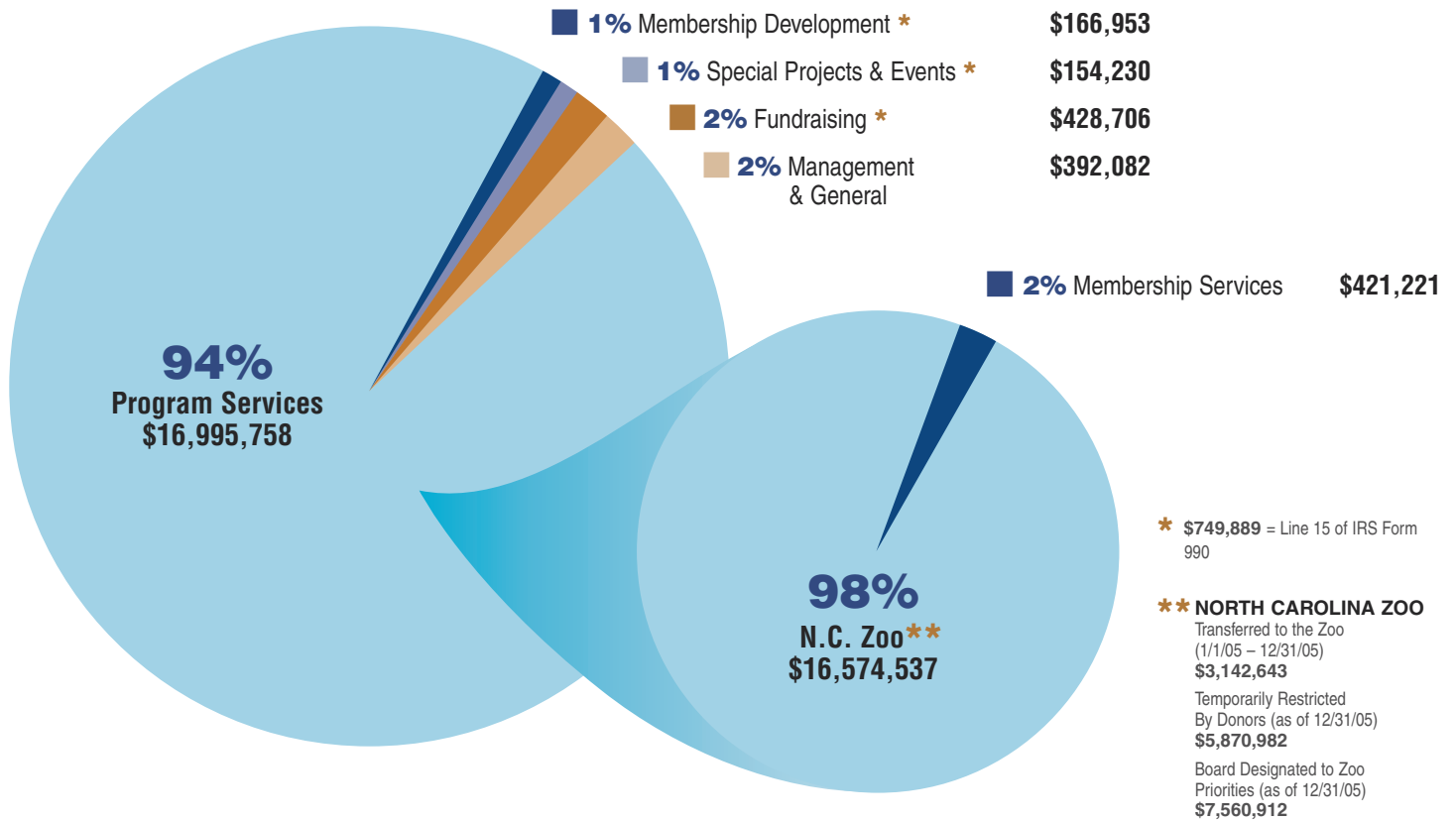
Revenues:

Contributions and Special Projects	\$ 312,199	\$ 470,096
Membership Dues	1,471,080	1,528,776
Gift Shop Revenue, Net of Direct Costs of \$853,016 and \$907,741	259,067	307,166
Investment Income	278,563	242,432
Net Realized and Unrealized Gain on Long Term Investments	5,462	172,206
Loss on Disposal of Property and Equipment	-787	0
Net Assets Released From Restrictions Satisfaction of Purpose Restrictions	<u>2,240,487</u>	<u>1,891,596</u>
Total Unrestricted Revenues	<u>\$ 4,566,071</u>	<u>\$ 4,612,272</u>

	2005	2004
Expenses:		
Program:		
Transfers to the N.C. Zoological Park*	\$ 3,142,643	\$ 2,740,894
Member Services	421,221	418,188
Total Program Expenses	<u>\$ 3,563,864</u>	<u>\$ 3,159,082</u>
Management and General	\$ 392,082	\$ 375,069
Membership Development	166,953	186,886
Special Projects (Includes \$154,230, "Use of Funds")	344,247	294,530
Fundraising	428,706	381,845
Total Expenses	<u>\$ 4,895,852</u>	<u>\$ 4,397,412</u>
Increase (Decrease) in Unrestricted Net Assets	<u>\$ (329,781)</u>	<u>\$ 214,860</u>
CHANGES IN TEMPORARILY RESTRICTED NET ASSETS		
Revenues:		
Contributions	\$ 3,209,646	\$ 2,110,584
Membership Restricted Revenue	34,612	
Gift Shop Restricted Revenue	14,802	5,325
Investment Income	7,443	8,095
Net Unrealized and Realized Gains (Loss)		
On Long-Term Investments	-369	8,107
Change in Value of Unitrust	873	
Net Assets Released from Restrictions	<u>-2,240,487</u>	<u>-1,891,596</u>
Increase (Decrease) in Temporarily Restricted Net Assets	<u>\$ 1,026,520</u>	<u>\$ 240,515</u>
CHANGES IN PERMANENTLY RESTRICTED NET ASSETS		
Revenues:		
Contributions	\$ 67,017	\$ 400
Investment Income	7,366	657
Net Unrealized and Realized Gains (Loss)		
On Long-Term Investments	<u>-65</u>	<u>3,435</u>
Increase in Permanently Restricted Net Assets	<u>\$ 74,318</u>	<u>\$ 4,492</u>
Increase in Net Assets**	\$ 771,057	\$ 459,867
Net Assets at Beginning of Year	<u>\$ 13,392,747</u>	<u>\$ 12,932,880</u>
Net Assets at End of Year	<u>\$ 14,163,804</u>	<u>\$ 13,392,747</u>
<hr/>		
* Transfers to the N.C. Zoological Park	\$ 3,142,643	\$ 2,740,894
** Increase in Net Assets	\$ 771,057	\$ 459,867
Net Income (Available for the N.C. Zoo)	\$ 3,913,700	3,200,761

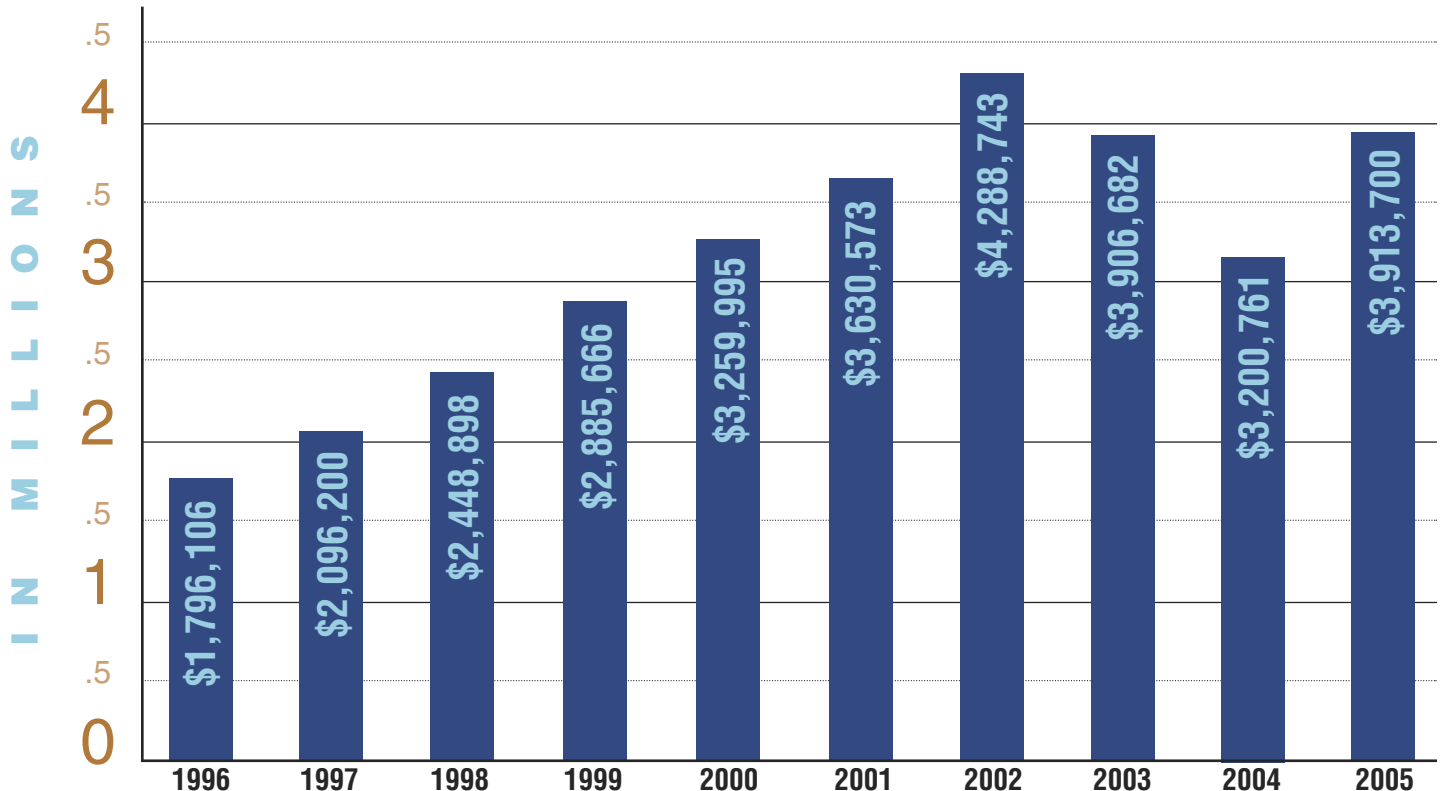
Annual Report 2005

Use of Funds



Society Net Operating Income

Net of Membership, Gift Shops, Contributions, Investments and Special Projects revenues/pledges after all N.C. Zoo Society expenses; available for Zoo purposes.



Donors in 2005

Thank you for your generosity
in putting the pieces together.



\$250,000 – \$499,999

Leonard & Rose Herring
BB&T

\$100,000 – \$249,999

Leonard G. Herring Family Foundation
F.M. Kirby Foundation, Inc.
Bob & Bonnie Meeker
Talmadge and Ian Silversides
Steinhardt Management Company

\$50,000 – \$99,999

Golden LEAF, Inc.
Lynne & Kent Graham
Mrs. Martha Iverson
Hans Klausner Foundation
Progress Energy
The Estate of Nina B. Redditt
Richard & Peggy Sloan

\$25,000 – \$49,999

In Memory of Stephen Ross Angel
Mr. & Mrs. J. M. Boozer
East Coast Metal Distributors
The Estate of Jeanne S. Greup
The Estate of Roma Gustavus
Betsy & Rick Huber
Mr. James H. Millis, Jr.
Molly Millis-Hedgecock
Pepsi Bottling Ventures
Mr. & Mrs. Peter Pickens
Simex Inc
Southern Bank Foundation

\$5,000 – \$24,999

Asheboro Elastics Corporation
BB&T – Asheboro
BB&T – Roanoke Rapids
John W. Becton & Nancy B.
Tannenbaum
Biltmore Estate Wine Company
Blumenthal Foundation
Mr. Keith Bradshaw
Mr. & Mrs. Ronald Butler
Mr. & Mrs. Arthur W. Clark
Clear Channel
The Courier-Tribune
Crumley & Associates
Dickson Foundation
ElectriCities of North Carolina, Inc.
First National Bank & Trust Company
Mr. John L.W. Garrou & Senator Linda
Garrou
George Foundation
Mrs. Jody Gilmore
J. Dent & Clarice Cato Goodyear
William H. and Vonna K. Graves
William Victor and Frances Claire
Groder Memorial Fund of the
Triangle Community Foundation
Martina & Bill Haggard
Frank Borden Hanes & Jane Craig
Hanes
John Hernandez & Louise Wee
Linda & J. A. Hodges
Bill & Ann Hoover
Joel & Brenda Huneycutt
J.R. Thompson Company
Mrs. Martha Luck Johnson
Klausner Furniture Industries Inc.
Ms. Harriet J. Kupferer
Dr. & Mrs. Melvin D. Levine
Christie & Eric Luckenbach
The McMichael Family Foundation
Mrs. Thetis J. Moore
Tom & Sally Moore
Ms. Emma Neal Morrison
Crae & Mamie Morton
N.C. State Beekeepers Association
N.C. State Beekeepers Coastal Plain
Chapter
N.C. Farm Bureau
N.C. Zoological Park – Design Division
Mr. John F. Nuccitelli
Oliver Rubber Company
Mrs. Ruth S. Oppold
Richard & Sara Jo Phillips
Diana & Chuck Pickering
Piedmont Printing
Mr. & Mrs. L. Richardson Preyer, Jr.

Nancy, Alan, & Alice Proia
Mr. & Mrs. Scott E. Reed
Tim & Leisa Schwarz
State Employee Combined Campaign
Mr. & Mrs. Charles W. Summers
Joyce B. & Leonard Tufts
United Way of Greater Greensboro
Watsco, Inc.
Mr. Don F. Wellington
Mr. & Mrs. M. Craig West
Nancy & Monty White
Ms. Judy Younts

\$1,000 – \$4,999

A.E. Finley Foundation, Inc.
Ralph & Silver Abernethy
Acme-McCrary & Sapona Foundation
Adams-Pierce Furniture Co., Inc.
Alamance County Beekeepers Assoc
Oliver W. Alphin
Chuck & Kris Ambrose
Asheboro Paper & Packaging
Asheboro Recycling Center
AVS Catering, Inc.
Bank of the Carolinas
B. B. Walker Foundation
Mrs. Suzanne B. Baker
Ed & Vivien Bauman
Beane Signs
Ms. Kimberly B. Beard
Barry & Danna Beith
Ben Owen Pottery
Mr. & Mrs. Bert Bennett
Mr. & Mrs. E. S. Bessette, Jr.
Mark & Carol Boles
Mrs. Mary Martin B. Borden III
Sandra & Bud Boren
Ed & Claudia Bost
David & Roxanna Bottjen
Mr. Robert G. Braswell
Mr. Phillip W. Brown II
Dr. Robert L. Brown
Brushy Mountain Bee Farm, Inc.
Mr. Joseph M. Bryan, Jr.
Pat & Howard Burkart
Burlington Woman's Club, Inc.
Mr. & Mrs. Ray Burrow
Fred E. & Jeanette D. Byerly
Ms. Mary G. Bynum
Mr. & Mrs. Clayton L. Cammack, Jr.
Ms. Denise Campbell & Mr. Don Clapp
Campmor
Cape Fear Center for Inquiry
Carolina Bank
Steve & Patti Carson
John & Beth Carter
Cherry, Bekaert & Holland

Chick-fil-A of Randolph Mall
Judy & David Clayton
Dr. Dennis Clements & Dr. Martha
Ann Keels
Coldwell Banker-The Real Estate
Shoppe
Mr. & Mrs. Timothy L. Cole
Mrs. Martha W. Coleman
Community Web
Consolidated Theatres
The Donald & Elizabeth Cooke
Foundation
Chris & Tammy Jo Cox
Cox's Harley Davidson Buell, Inc.
Credit Bureau Collection Sys.
J. Keith & Jane Crisco
Mr. & Mrs. David Cromartie
Braxton Culler
Mr. & Mrs. JB Davis
Mr. Fredrick N. Day IV
Days Inn
Ms. Anna Dean
DeSarro Wildlife Resource
David & Janice Dickerhoff
James P. & Joyce H. Dickerson
Angela & Starke Dillard
Dr. David Dorman & Dr. Jan Dye
Mr. & Mrs. Paul Doyon
Mr. Noel L. Dunn
Mr. Mike Durham
Durham Academy
Mr. Benny L. Eanes
Elastic Therapy, Inc.
Energizer
Ms. Nancy Faircloth
Fanwood Foundation/West
Mr. Mike Ferree
A. E. Finley Foundation, Inc.
First Bank – Asheboro
Ms. Mary F. Flanagan
Forsyth Co. Beekeepers Association
Dr. Neal Foster
Harriette & Larry Frank
Rick & Nancy Frazier
Mr. Mike Freeland
Mrs. Dewey A. Frick
Mrs. Eugenie M. Frick
Paul & Billie Fulford
Dr. Anne Gaal & Mr. Brian Fields
Russell & Geordana Gantman
Mr. & Mrs. Richard J. Garkalns
Mr. Peter Gilmore
Jeff Glutz and Adair Gibson
Golden Corral - Asheboro
Haley & Richard Gray
Ms. Ellen M. Greer
Ms. Amy Grissom & Mr. David
Cohen
Craig & Eileen Gruber
Mr. & Mrs. Joseph L. Gulledge
William & Rose Guthrie
James & Sylvia Hall
Joy & Charlie Hamlin
Hampton Inn

Dr. James Harper & Dr. Patricia
O'Leary
Audrey S. Harris
Mrs. L. Simpson Hasler
Joan & William Hemphill
Page & Fred Hill
Bill & Rosemary Hinkle
Adam & Bridget Hobson
Francisco & Beth Hodges
John & Jill Hoffman
Gene & Pat Holder
Mr. Dwight Holland
Mike & Jennifer Hollander
Sandra & Charles Holliman
Ms. Lois Holt
Mr. & Mrs. Ralph M. Holt, Jr.
Mr. W. Jack Holt
Mr. & Mrs. Plato W. Hoyle
Mr. & Mrs. C. Melvin Hughes
Mr. & Mrs. Sam Hupman, Jr.
Ink 'N Stitches
Mrs. Melba Isley
J. D. Wilkins Co., LLC
Marv & Burke Jensen
Mr. & Mrs. David G. Johnston
Dr. & Mrs. David M. Jones
K & W Cafeterias, Inc.
Mr. & Mrs. Thomas F. Keller
Ms. Kim K. Kelly
Suzanne Kennedy-Stoskopf &
Michael Stoskopf
Mrs. Angela Kern
Mr. Herbert S. Kerr
Jon & Cindy Kilborn
Mr. Robert King
Lisa Kirby
Mr. Andrew Krouse & Ms. Linda
Dixon
Ms. Andrea Krupa & Mr. Dan Reed
Scott & Marilyn Lea
Ms. Nancy Leeper
Leopard Spot Gift Shop
Paul & Caroline Lindsay
Ms. Susan Lindsay
Mrs. Cynthia H. Little
Mr. & Mrs. W. E. Love, Jr.
Lowe's Home Center of Asheboro
Dr. & Mrs. John A. Lusk
Eddie & Ginger Lynch
Gus & Geary Mandrapilias
Brian & Mary Anna Marley
The Estate of Harold McAllister
McDowell Lumber Co.
Joan & Guy McMurray
Mid-Atlantic Hay Company
Mrs. Tonya Miller
Walker & Joanne Moffitt
Chris & Dawn Morgan
Mr. Ron Morris
Melanie & Chris Morrison
Mr. & Mrs. Hugh Morton
Scott & Mary Murkin
Nationwide

N.C. Zoological Park – Animal
Division
N.C. Zoological Park Staff
Troy & Sara Nichols
Orange County Beekeepers
Association
Michael Paris & Terry L.
Blankenship-Paris
Paul Thomas Tire
John & Tricia Payne
Mrs. Janice Pearsall
Petro Kulynych Foundation, Inc.
Phil Morgan Pottery
Mr. Kevin Phillips & Ms. Debra
Patrick
The Plant Shoppe
Ms. Pamela Potter
Brad & Cathy Procton
Progress Energy – Aberdeen
Mary Joan & Alan Pugh
Pugh Funeral Home
Elizabeth & Robert Pungello
RBC Centura
Randolph Bank & Trust Co.
Randolph Electric Membership
Corporation
Randolph Hospital
Randolph Medical Associates
Jim & Sally Rayburn
Mr. Don Redding
John & Joyce Reedy
Matt & April Richmond
Mr. & Mrs. William A. Roberts
M.M. III & Linda Salguero
San Felipe Mexican Restaurant
Sara Lee Branded Apparel
Schneider Stone, Inc
Jason & Janet Schwarz
Robert A. Sebrosky
Mr. & Mrs. Robert C. Shaffner
Mr. & Mrs. Sherrill Shaw
Short Stop/Randolph Oil
Silver Eagle LLC
Sir Pizza of Asheboro
Mr. & Mrs. Earl F. Slick
Mr. & Mrs. C. Hamilton Sloan
Ms. Gaye Spears
Mr. Jim Spires
Sprint
Ms. Molly Stanley
John H. E. Stelling & Victoria
Herring
Mary P. Stephenson
Debbie & Terry Story
Sunset Realty of Asheboro
SunTrust Bank
Surgical Associates of Asheboro
Mr. Scott Sykes
Cullie & Sylvia Tarleton
Melissa & Fred Taylor
Technimark, Inc.
J. Paul & Sandra Thomas
Dick & Millie Thomas
Harriet & Dan Thompson

Porter & Betty Thompson
The Timken Company
Mr. & Mrs. John O. H. Toledano
Michael & Mirafior Tove
Triangle United Way
Cheryl & Bo Turner
Unilever Bestfoods
Juan M. Villa
Dr. Randal Von Seggern
Wachovia Bank
Wal-Mart Store #1132
Dr. & Mrs. Hugh J. Wallace
Dr. & Mrs. Stephen Wallenhaupt
Rolf & Teri Wallin
Joan & James Wesolowski
Lee & Rebekah Westover
Henry & Joan Wheeler
Mr. Jonathan E. Wilfong & Ms. B. W.
Baker
Mr. Robert J. Willis, Attorney at Law
Mr. & Mrs. J. Tylee Wilson
Sydney & David Womack
Womble Carlyle Sandridge & PLLC
William J. & Sarah B. Wood
Rhonda & John Workman
Wren Foundation, Inc.
Edith & Leo Yakutis
Ms. Malia Young
Tom & Fran Young
Jasmine & Eric Zaibek

Lion's Pride

Ms. Barbara Brandeis Alotis
Oliver W. Alphin
Mable Anderson & A. P. Anderson,
Jr.
Ms. Ellen Anderson
Mrs. Warner L. Atkins
Mr. & Mrs. C. E. Atwell
Sandor A. Balogh
Mr. & Mrs. William M. Barnhardt
Pegge Newsome Baughcum
Ed & Vivien Bauman
Brian H. & Sally Benfield
Mr. Carlos Black
Ms. Katherine Bond
J. M. & Ethel A. Boozer
David & Roxanna Bottjen
Ms. Barbara Branson
Debby Hallyburton & Mike Brewer
Ross D. Bulla
Scott Burkhead
Mr. & Mrs. W. L. Burns, Jr.
Jacob Burton
Fred E. & Jeanette D. Byerly
Mr. & Mrs. Clayton L. Cammack, Jr.
Hodges & Joe Carroll
Ms. Beth S. Carter
Mr. Ken Carter
E. Jeanine Chadwell
Richard C. Chambers
Mr. & Mrs. Arthur W. Clark
Rick & Marcia Cole

Mr. & Mrs. Herman Cone, Jr.
Mr. Ray Covington
Mr. & Mrs. Steven Criscione
James D. Croom, Jr.
Mr. John Crosland III
Mr. Edward M. Davis
Mr. Robert R. Dobo
Bill & Barbara Dobo
Dan & Pamela Dugan
Mr. Benny L. Eanes
Mr. & Mrs. Raymond Eaton
Mrs. Muriel J. Fox
Dr. & Mrs. Larry Francis
Harriette & Larry Frank
Mrs. Dewey A. Frick
Lt. Col. & Mrs. Robert L. Fry USMC
(Ret.)
Mr. & Mrs. Noel E. Garvin
Kevin Scott and Eileen Gibbs
Gardner & Margaret Gidley
Florence W. Gilkeson
J. Dent & Clarice Cato Goodyear
Mr. & Mrs. F. Kent Graham
Mr. Andrew Grant
Dr. William H. & Mrs. Vonna K.
Graves
Mrs. Lynette Green
Mr. & Mrs. Joseph L. Gulledege
William & Rose Guthrie
Martina & Bill Haggard
Frank Borden Hanes & Jane Craig
Hanes
Mrs. Catherine B. Harley
Gil & Dana Hartis
Mr. A. Cary Hawthorne, Jr.
Dr. & Mrs. Joseph Hedgpeith
Mrs. William M. Hendricks
Ms. Barbara Kay Hilburn
Geraldine M. Hilton
Gene & Pat Holder
Ms. Lois Holt
Mr. W. Jack Holt
Marbry & Judith Hopkins
Richard & Betsy Huber
Mr. & Mrs. Sam Hupman, Jr.
Mr. & Mrs. David G. Johnston
Mr. K. G. Johnston
William McKay Johnston
Mrs. Linda M. Jones
William & Nancy Jones
Mr. Carl E. Jordan
Ms. Jeannie Kincaid
Lisa Kirby
Charisse A & Phillip Krauth
Ms. Kathy Kueider & Mr. Wayne
Morrisette
Harriet J. Kupferer
Mr. John E. Kuras
Bonnie & Joe Landreth
Jean B. Lange
Carolyn W. LeBauer
Mr. Charles E. Mann
Millicent & Lawrence Marsden

John M. Matthews, Jr. & Karan P.
Matthews
Mr. E. W. Maxson
Mr. Walter R. Miller
Molly Millis-Hedgecock
Mr. & Mrs. Thomas T. Moore, Jr.
Mrs. Marjorie Moser
George & Etta Mullikin
Ms. Martha H. Noyes
Perry & Betty Nystrom
Jayne Owen Parker, Ph.D.
Ms. Donna Parnell
Mr. Mark Parrish
John H. Payne
Ms. Jennie L. Peacock
Jeff & Ginger Penley
Jan & Michael Penny
Mr. William T. Peters
Mr. & Mrs. S. Dave Phillips
Mr. Richard Pietro
Mrs. Jane Hanes Poindexter
Ken & Anne Pojman
Norwood & Linda Pope
Diane & Kenneth Powell
Laura W. Pratt
Mrs. Sandra F. Privatte-Robinson
Alan & Nancy Proia
Mr. & Mrs. J. M. Ramsay, Jr.
John & Barbara M. Reavis
John & Joyce Reedy
Joan Reid & John Montgomery
Mr. Paul Richardson
Mr. W. V. Roessler
Mr. & Mrs. James W. Rogers
Mr. & Mrs. Newell E. Rollins
Mr. & Mrs. F. L. Rorie
Robert G. Scruggs
Robert A. Sebrosky
The Honorable A. Lincoln Sherk
Mrs. Mary Ann Sikes
Richard & Peggy Sloan
Mr. & Mrs. Albert F. Sloan
Mrs. Tommie Lou Smith
Ms. Mona C. Stadler
Sally Steele
John H. E. Stelling
Mary P. Stephenson
Horst & Judy Stierand
Robert & Ruth Stolting
Ann Cutler Stringfield & Robert
John Darby
Mr. & Mrs. Charles W. Summers
Mr. & Mrs. James E. Swofford
Tim & Charlotte Thomas
Joyce B. & Leonard Tufts
Col. & Mrs. E. J. Vaughn
Mr. John R. Walker
Mr. Melvyn Wallace
Dr. & Mrs. Stephen Wallenhaupt
Ms. Laura Warren
Mrs. Charlotte Watkins
Terry & MariLee Weaver
Dr. J. Courtland White

Mrs. Nancy Hanes White
Russ Williams & Ann Lynch
Mrs. Peggy B. Williamson
Mrs. Nancy H. Wilson
William J. & Sarah B. Wood
Casey & Casey Younts
Dr. Susan E. Zarutskie

Benches

In Memory of Jonathan Van Etten
Dr. Neal Foster
Mr. Robert King
Eddie & Ginger Lynch
Mr. Don Redding

Zoo Society Members 2005 Conservator's Circle

Ralph & Silver Abernethy
Oliver W. Alphin
Mable Anderson & A. P. Anderson,
Jr.
Ms. Louise B. Bahnson
Ed & Vivien Bauman
John W. Becton & Nancy B.
Tannenbaum
Mr. & Mrs. E. S. Bessette, Jr.
Mr. & Mrs. J. M. Boozer
Ed & Claudia Bost
David & Roxanna Bottjen
Mr. Joseph M. Bryan, Jr.
Mrs. Shirley R. Burns
Mr. & Mrs. W. L. Burns, Jr.
Mr. & Mrs. Ray Burrow
Mr. & Mrs. Ronald Butler
Fred E. & Jeanette D. Byerly
Mr. & Mrs. Clayton L. Cammack, Jr.
Mr. & Mrs. David Cromartie
Angela & Starke Dillard
Mrs. Dewey A. Frick
Mrs. Eugenie M. Frick
Russell & Geordana Gantman
Mr. & Mrs. Joseph L. Gulledege
William & Rose Guthrie
Martina & Bill Haggard
Audrey S. Harris
Mrs. L. Simpson Hasler
Leonard & Rose Herring
Page & Fred Hill
Betsy & Rick Huber
Mr. & Mrs. Sam Hupman, Jr.
Marv & Burke Jensen
Mr. Thomas S. Kenan III
Mr. Herbert S. Kerr
Lisa Kirby
Mr. & Mrs. Bruce D. Langdon
Richard Loeppert
Mr. & Mrs. W. E. Love, Jr.
Millicent & Lawrence Marsden
Bob & Bonnie Meeker
Tom & Sally Moore

Richard & Sara Jo Phillips
Brad & Cathy Procton
Nancy, Alan & Alice Proia
Jim & Sally Rayburn
John H. E. Stelling and Victoria
Herring
Mr. & Mrs. Charles W. Summers
Porter & Betty Thompson
Joyce B. & Leonard Tufts
Dr. & Mrs. Hugh J. Wallace
Dr. & Mrs. Stephen Wallenhaupt
John & Shirley Ward
Russ Williams & Ann Lynch
Mr. & Mrs. J. Tylee Wilson

President's Club

Mrs. Warner L. Atkins
Mr. & Mrs. Richard L. Austin
Robert & Elaine Baillie
Mrs. Pegge N. Baughcum
Mr. & Mrs. William C. Beck, Jr.
Irwin & Carol Belk
Mr. Carlos Black
Mr. & Mrs. James D. Blount, Jr.
Mrs. Mary Martin B. Borden III
Mr. Ross D. Bulla
Jeff & Toni Bulla
Carol & Jerry Bullins
Pat & Howard Burkart
Scott Burkhead
Mr. & Mrs. James M. Campbell, Jr.
Charles D. Owen Manufacturing Co.
Inc.
Mr. & Mrs. William G. Clark III
Mr. & Mrs. Arthur W. Clark
Mrs. Elizabeth J. Coltrane
Mr. & Mrs. Herman Cone, Jr.
Jerry & Val Cooper
Mr. John Crosland III
Ms. Sue M. Daughtridge
Ms. Barbara R. Deans
Jane & John DeCoursey
Ms. Janet Dellosa & Mr. Gerald
Smith
James P. & Joyce H. Dickerson
Richard & Esther Dickerson
Dr. Roy C. Dixon
Dr. David Dorman & Dr. Jan Dye
Christopher & Martha Eaker
Elliot Office Equipment Company
Mrs. Clarita F. Emory
Shirley Erath
Mr. & Mrs. James T. Fain III
Mr. James F. Fletcher
Mr. & Mrs. Martin B. Foil, Jr.
Dr. & Mrs. Robert H. Gaither
Mr. & Mrs. Noel E. Garvin
Mrs. Jody Gilmore
Mr. Albert L. Goldhammer
Ms. Barbara J. Gotherman
Lynne & Kent Graham
Murray & Joan Greason
Charlie & Chris Greene

Mrs. Mary Grover
Frank Borden Hanes & Jane Craig Hanes
Jim Hanes
Mr. Peter B. Harkins & Dr. Judith Stanton
Mrs. Catherine B. Harley
Mrs. Sara Larson Harper
Nat & Sheila Harris
Jim & Karen Hastings
Mr. Paul Haughton
Hedgecock Builders Supply Company
Mr. William R. Henderson
Mr. & Mrs. E. A. Horrigan, Jr.
John & Donna Howard
Mr. F. Ross Johnson
Jim & Kathy Johnson
Mr. & Mrs. Earl Johnson, Jr.
Mr. & Mrs. David G. Johnston
William McKay Johnston
Dr. & Mrs. George B. Johnston
Tom & Janet Kean
Mr. & Mrs. Robert C. Ketner
Michael & Joanna Lee
Dr. & Mrs. Clifford Long
Gus & Geary Mandrapilias
Mr. E. W. Maxson
Donald McClusky
Ms. Karyl J. McClusky
Doug & Becky McDowell
Mr. & Mrs. Barry McGinnis
Mr. & Mrs. John P. McLean
Joan & Guy McMurray
Mrs. James H. Millis
Mr. & Mrs. Stephen M. Mix
Mrs. Thetis J. Moore
Keith & Ellen Morgan
Mr. & Mrs. Ronald G. Morgan
Mr. & Mrs. Hugh Morton
Mrs. Marjorie Moser
Ms. Martha H. Noyes
John & Tricia Payne
Mrs. Janice Pearsall
Lisa & Billy Pennington
Mr. & Mrs. S. Dave Phillips
Mrs. Jane Hanes Poindexter
Ken & Anne Pojman
Nancy S. Porter
Mr. & Mrs. J. M. Ramsay, Jr.
Mr. & Mrs. Julian W. Rawl
Mr. Don Redding
Dr. & Mrs. James M. Rich, Jr.
Mr. & Mrs. Gray Robinson
Mrs. James M. Ross
Mr. Dalton D. Ruffin
William & Martha Scarborough
Mr. & Mrs. Terry L. Scarlette
Mr. Roux Setzer
Mr. Thomas C. Short
Talmadge & Ian Silversides
Mr. & Mrs. John C. Slane
Mr. & Mrs. Earl F. Slick

Mr. & Mrs. Albert F. Sloan
Ms. Linda M. Smith
Mrs. Mary C. Smith
David & Sarah Stedman
Paul & Bess Stephanz
William A. Stokes & Constance D. Stokes
Rick & Cheryl Stroupe
Surtman Foundation
Jim & Jodi Swofford
James B. & Mary Ann Taylor
Mr. & Mrs. M. Roy Teer
Mr. R. Dillard Teer
Ms. Nancy Teer-Sims
Mr. & Mrs. Russell W. Terry
Mrs. Werner Thiele
Leroy B. & Linda G. Townsend
Mr. & Mrs. William Underwood III
Mrs. Nan Davis Van Every
Mrs. Juliana D. West
Nancy & Monty White
Mr. & Mrs. C. W. Womble
William J. & Sarah B. Wood
Dr. William V. Wright

Director's Guild Joining in 2005

Ms. Kimberly B. Beard
Mr. Phillip W. Brown II
Steve & Patti Carson
Dr. Dennis Clements & Dr. Martha Ann Keels
Chris & Tammy Jo Cox
David & Janice Dickerhoff
Paul & Billie Fulford
Dr. Anne Gaal & Mr. Brian Fields
Haley & Richard Gray
Ms. Amy Grissom & Mr. David Cohen
Mr. Sam Harmon & Ms. Sherry Mosser
Sandra & Charles Holliman
Mr. & Mrs. Plato W. Hoyle
Mrs. Melba Isley
Suzanne Kennedy-Stoskopf & Michael Stoskopf
Jon & Cindy Kilborn
Ms. Andrea Krupa & Mr. Dan Reed
Ms. Susan Lindsay
Melanie & Chris Morrison
Troy & Sara Nichols
Matt & April Richmond
Jason & Janet Schwarz
Melissa & Fred Taylor
J. Paul & Sandra Thomas
Mr. Bill Thompson
Michael & Mirafior Tove
Joan & James Wesolowski
Mr. Jeffrey J. Wilson
Mr. & Mrs. Christopher F. Wilson
Rhonda & John Workman
Edith & Leo Yakutis
Jasmine & Eric Zaibek

Corporate Members in 2005

Corporate Elephants

MindWorks Multimedia, Inc.
Time Warner Cable

Corporate Lions

BB&T
Glaxo SmithKline
Progress Energy
RBC Centura
Wachovia Corporation
webslingerZ

Corporate Bears

East Coast Metal Distributors
First National Bank & Trust Company
Lance Foundation
Paul Thomas Tire
Sprint
Truliant Federal Credit Union
Weaver Foundation

Corporate Foxes

Blue Rhino Corporation
CARQUEST Auto Parts
Glen Raven, Inc.
Lowe's Home Center of Asheboro
Radiator Specialty Company
Randolph Telephone
Sodexo
Syngenta Crop Protection, Inc.

Corporate Seals

Acme-McCrary & Sapona Foundation
AIG United Guaranty Corporation
Archdale Oil Company
Arrow International, Inc.
Asheboro Nissan Honda
Asheboro Paper & Packaging
Bank of Granite
Bank of North Carolina
Biltmore Estate Wine Company
Biscuitville, Inc.
The Borden Fund, Inc.
Broyhill Family Foundation, Inc.
Caraway Conference Center & Camp
Carolina Bank
Carolina Farmers Mutual Insurance Company
The Cato Corporation
Chandler Concrete Company, Inc.
Charlotte Pipe & Foundry Company
CommScope Inc.
The Courier-Tribune
Davis Furniture Industries, Inc.
Delta Controls Inc.

DeNAMUR Chiropractic
Double Data, Inc.
Elastic Therapy, Inc.
Energizer
First Bank
FirstPoint, Inc.
Food Lion
Golden Corral Corporation
The Goodyear Tire & Rubber Co.
Häfele America Company
High Point Bank & Trust Company
Honda Power Equipment Manufacturing, Inc.
J.D. Wilkins Co., LLC
Jefferson Pilot Financial
John Deere Company
John Deere Turf Care
Kindred Hospital
Konica Minolta Manufacturing U.S.A.
Lexington State Bank
Locust Lumber Co. of Locust and Monroe
Martin Marietta Aggregates
McDowell Lumber Company
Mt. Olive Pickle Company
North Carolina's Touchstone electric cooperatives
North Carolina Troopers Association
Oliver Rubber Company
Piedmont Natural Gas Company
Platinum Corral, LLC
Randolph Bank & Trust Co.
Randolph Electric Membership Corporation
Randolph Hospital
Russell Terry Investments, LLC
Sara Lee Underwear
SAS Institute, Inc.
SCYNEXIS, Inc.
SouthCorr Packaging, L.L.C.
Sun Trust Bank
Technimark, Inc.
Therapeutic Alternatives
The Timken Company
Timothy's
Triad Corrugated Metal, Inc.
Trophy Shop Gifts & Engraving
Unilever Bestfoods
Uwharrie Capital Corporation
Wyeth Vaccines, Sanford Facility



PRINTED ON
RECYCLED PAPER

Hunsucker Printing Co., Inc.
Asheboro, NC

N.C. Zoo Society *Board of Directors*

2005

2006

Clarice Cato Goodyear
Chair
Charlotte

John L.W. Garrou
Vice Chair
Winston-Salem

E. Rhone Sasser
Treasurer
Whiteville

Diana C. Pickering
Secretary
Asheville

Charles M. Ambrose, ED.D.
Misenheimer

Jeffery B. Davis
Asheboro

Fred N. Day IV
Raleigh

Jeff P. Files
Durham

Mary F. Flanagan
Chapel Hill

Harriette M. Frank
Durham

Emerson F. Gower, Jr.
Florence, S.C.

Bobbie Hardaker
Durham

Addie Luther
Asheboro

George McCanless
Raleigh

Hugh "Crae" Morton III
Boone

L. Glenn Orr, Jr.
Winston-Salem

L. Richardson Preyer, Jr.
Hillsborough

Scott E. Reed
Winston Salem

Nancy Hanes White
Raleigh

John L.W. Garrou
Chair
Winston-Salem

Jeff P. Files
Vice Chair
Durham

George McCanless
Treasurer
Raleigh

Diana C. Pickering
Secretary
Asheville

Charles M. Ambrose, ED.D.
Misenheimer

Albert L. Butler, III
Winston-Salem

Jeffery B. Davis
Asheboro

Mary F. Flanagan
Chapel Hill

Emerson F. Gower, Jr.
Florence, S.C.

Lynne Yates Graham
Advance

Earl Johnson, Jr.
Raleigh

Addie Luther
Asheboro

Molly Millis-Hedgecock
High Point

Hugh "Crae" Morton III
Linville

Mary Norris Preyer Oglesby
Chapel Hill

Nancy Proia
Durham

Scott E. Reed
Winston-Salem

David K. Robb
Charlotte

Laura Horton Virkler
Hillsborough

Kimberly A. Williams
Asheboro



Yes, I'd like to help save a piece of the world for its wildlife

Name _____

Address _____

City, State, Zip _____

Day Phone _____ E-Mail _____

I/We wish to contribute \$ _____ to the N.C. Zoological Society

I/We wish to pledge \$ _____ over a _____ year period.

PAYABLE: Quarterly \$ _____ Semi-annually \$ _____

Annually \$ _____

Please make checks payable to: **North Carolina Zoological Society;**
4403 Zoo Parkway; Asheboro, NC 27205

I/We wish to charge this gift to:
 Visa MasterCard Amex Discover

Acct. No. _____ Security Code _____

Exp.Date _____ Signature _____ 05ANN

Please use my gift as an unrestricted donation or
 as support for _____

Do you or your spouse work for a matching gift company?
 Yes No

If so, name of the company _____

Your gift to the N.C. Zoo Society is tax deductible.

I/We have included the N.C. Zoological Society in a will or trust.

- I am interested in obtaining information on:
- Bequests or Gifts Through my Will, Charitable Trusts,
 - Gifts of Real Estate, Charitable Gift Annuities, Gifts-in Kind,
 - Gifts Through Life Insurance, Gifts of Mutual Funds,
 - Gifts of Appreciated Securities, Gifts of Personal Property
 - Other _____



Saving
a Piece of
the World for
its Wildlife

**NORTH CAROLINA
ZOOLOGICAL SOCIETY**

4403 Zoo Parkway
Asheboro NC 27205
www . nczoo . com
phone: 336. 8797250
fax: 336. 8793963